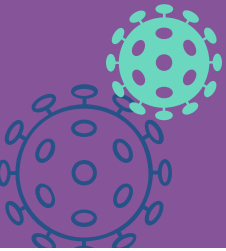


WHAT DO PARENTS & GUARDIANS NEED TO DO?



SA MONTESSORI
quality early childhood education and care

Supporting our Covid Management Protocols



Most of our Covid management protocols are the responsibility of our team members, but there are a few directions that we need our families to follow to help us minimise risk. We thank you for your support and cooperation.



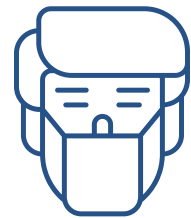
Please stay away if you are sick

Please don't attend our premises if you are unwell, and please keep your child home if they are showing symptoms of infectious illness.



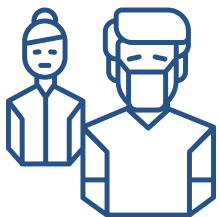
Maintain hand hygiene

Please use hand sanitiser when entering our premises.



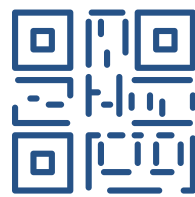
Wear a face mask

Adults and children over 12 are required to wear masks at all times on our premises (including outdoors). If you have a mask exemption please contact your centre Director.



Follow social distancing

This includes dropping off and collecting your child in the area designated by your centre, and ensuring that each child is accompanied by only one adult.



Please 'Check in'

Use our QR code to check in when you arrive.



Respect our team members

Please follow instructions our team members give you, and treat them with courtesy. Our team members are working hard to support our children and families in a challenging situation, and they deserve your respect and appreciation.

Please notify your centre by phone or email if your child (or a family member who attended our site) tests positive.

We will inform our families, but we will not identify your child by name. We will follow SA Health's advice regarding closures and isolation for close contacts.

We also encourage you to inform us if your child is isolating as a 'close contact', as some families wish to take the extra precaution of isolating if their child has interacted with a close contact.

For more information please visit www.samontessori.com.au/covid-management/